

# DINNER MENU

最高級黒毛和牛専門店

ステーキ・ハンバーグ

ミート矢澤

名古屋

NAGOYA

# Wagyu 100% hamburger steak

• Hamburger steak regular size (R) 180g

• Hamburger steak large size (L) 240g

## Cheese hamburger steak with Demi glace sauce

Regular ¥2,250 / Large ¥2,700



< without cheese >

Regular ¥2,050 / Large ¥2,500

The potatoes for the side dish are mashed potatoes. Other vegetables are changed according to the season.

~ Japanese style soy sauce ~

## Hamburger steak topped with a fried premium egg.

Regular ¥2,230 / Large ¥2,680



The potatoes for the side dish are mashed potatoes. Other vegetables are changed according to the season.

## Hamburger steak with grated Japanese radish and Ponzu sauce

Regular ¥2,000 / Large ¥2,550



The potatoes for the side dish are mashed potatoes. Other vegetables are changed according to the season.

## Hamburger steak with Japanese style soy sauce

Regular ¥1,950 / Large ¥2,500



The potatoes for the side dish are mashed potatoes. Other vegetables are changed according to the season.

## Toppings

1. Premium fried egg  
¥180



2. Fried Japanese garlic chips  
¥200



3. Cheddar cheese  
¥200



4. Bacon  
¥320



## Lunch set

Rice (Large Rice or Bread: +¥50) + Onion soup + Mini salad ¥700

## Side menu

Rice (Large Rice: +¥50) ¥300    Onion soup ¥300    Bread ¥350    Mini salad ¥300

We use "Hitomebore from Tottori" selected by a 5 star rice meister.

※The photo is for illustrative purposes only. All price include tax.  
Vegetables as a side dish may differ from the actual menu.

# Wagyu 100% hamburger steak & steak combos

•Steak Regular size (R) 150g

•Steak Small size (S) 75g

We recommend and serve steaks medium rare.  
Please tell us how you would like your steak cooked.

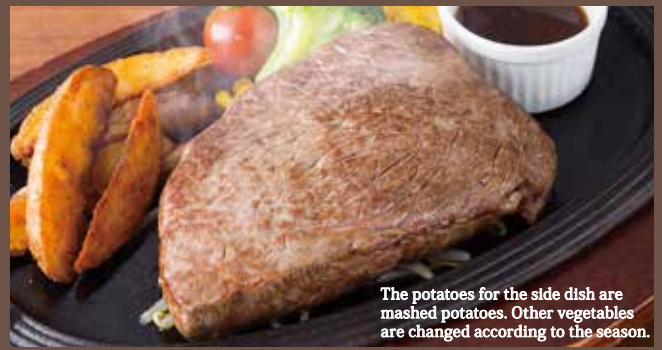


The potatoes for the side dish are mashed potatoes. Other vegetables are changed according to the season.

## Yazawa steak combo (Inside round)

Hamburger steak (180g) + Steak (S) 75g ¥4,400  
+ Steak (R) 150g ¥6,200

Hamburger steak can be changed to large (L) size for +550 yen.



The potatoes for the side dish are mashed potatoes. Other vegetables are changed according to the season.

## Yazawa steak (Inside round)

Rich in the unique umami of lean meat and has a strong meaty taste.

Regular ¥4,100 / Double ¥7,700  
(150g) (150g × 2)

## Steak sauce Please choose one of 4 steak sauces.

Japanese style soy sauce

Original Ponzu sauce

Soy sauce with Herb-butter

Soy sauce with Wasabi



It comes with 4 kinds of steak sauces and Yazawa demi glace sauce.

## Toppings

- |                                |      |                   |      |
|--------------------------------|------|-------------------|------|
| 1. Fried premium egg           | ¥180 | 3. Cheddar cheese | ¥200 |
| 2. Fried Japanese garlic chips | ¥200 | 4. Bacon          | ¥320 |

## Kid's Meals (Under the elementary-age child only)



**Kid's Hamburger steak ¥1,800**  
Wagyu 100% hamburger steak (120g)

Rice or bread • Sausage • Fried egg •  
mashed potatoes & gratin with meat sauce •  
Corn & vegetables as a side dish • Juice • Ice cream

## Beverages

Suntory The Premium Malts	¥650	Oolong tea	¥450
Bottled beer (Asahi Super dry or Kirin classic lager) Each:	¥750	Jasmine tea	¥450
Bottled beer (Suntory All Free)	¥500	Coca-Cola	¥450
Glass wine (Red or White)	¥850	Orange juice	¥450
Highball (Whiskey and soda)	¥660	Apple juice	¥450
Shochu Cocktail (Jasmine tea or Oolong tea)	¥600	Coffee (Hot or Ice)	¥450

※The photo is for illustrative purposes only. All price include tax.  
Vegetables as a side dish may differ from the actual menu.